

Introduction to Dreamweaver

Instructional Technology Lab



Workshop Objectives:

- ▶ By the end of the workshop, you will be able to create a simple Dreamweaver website including:
 - “Defining” a Dreamweaver site
 - An index page links to other pages
 - Links to other websites
 - Links within a page
 - Images
 - Different text formatting, fonts, and colors



Copyright The George Washington University 2000

2

HTML & web pages

- ▶ Hypertext mark-up language.
- ▶ Can use different HTML editors
 - Composer
 - DreamWeaver
 - Front Page*
 - Write HTML yourself

We will use Dreamweaver during this workshop.



Copyright The George Washington University 2000

3

What is Dreamweaver?

- ▶ HTML editor
- ▶ Can use in combination with other Macromedia software, JavaScript, etc.
- ▶ WYSIWYG design window
- ▶ Can edit HTML code as well
- ▶ FTP tool to upload your website
- ▶ Has built-in tools to manage your entire website.



Copyright The George Washington University 2000

4

Dreamweaver Interface

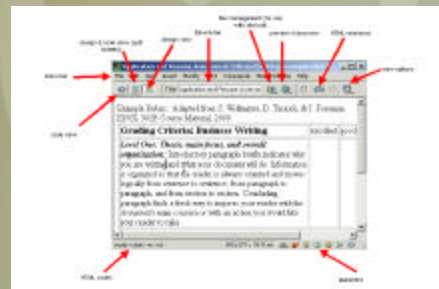
- ▶ **Design View** – main design window
- ▶ **Properties box** – use to apply attributes to objects and text
- ▶ **Objects box** – use to insert objects
- ▶ **Launcher box** – use to open different Dreamweaver tools (most will not be covered in this workshop)
- ▶ **Site file view** – use to manage all files in your Dreamweaver website.



Copyright The George Washington University 2000

5

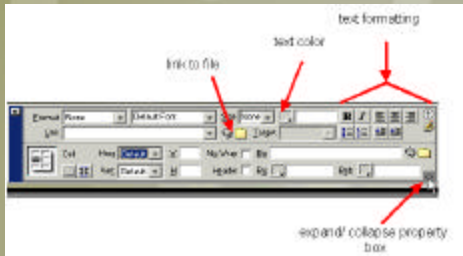
Design View Window



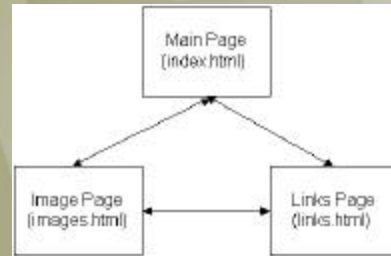
Copyright The George Washington University 2000

6

Properties Box



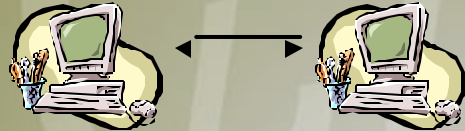
Workshop website site map



Define your website

- In order for Dreamweaver to help you manage your web site, you must first *define your website* (i.e. tell Dreamweaver you are creating a new site).
- Defining your website creates a version of your website on *your local computer*. Once you finish designing your site, you can upload a *copy of your site* to the web (so other people can see it).
- Click on Site > New Site

Server & client



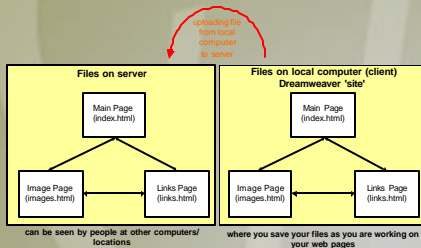
Server

- "Serves" web pages to clients
- (sends a copy to your browser)
- Where your web page is stored so others can see it.

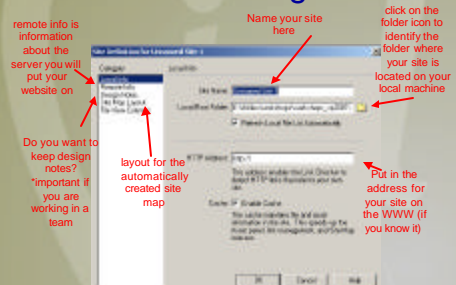
Client

- your computer
- Where you create your web page

Dreamweaver site illustration



Define site dialogue box



Important site management

- Each new website you build should be defined as a *separate site*.
- Dreamweaver can manage as many separate sites as you want.
- If you work on *more than one computer* you have to define a site on each computer you will be working on.
- **All the files for your site must be in the folder associated with the site or sub-folders**

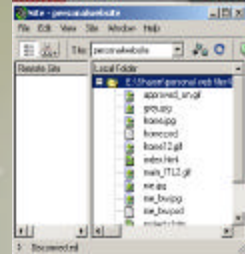


Copyright The George Washington University 2000

13

Site View

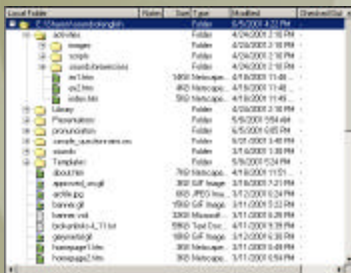
- Once you define a site, you can click on site > site files to view all the files associated with that site



Copyright The George Washington University 2000

14

Example site files for large site



Copyright The George Washington University 2000

15

Note

- Notice you now have two Dreamweaver windows open:
 - Your design window
 - Your site files
- You can switch back and forth between them by using the task bar.

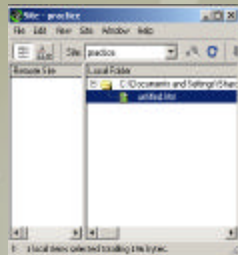


Copyright The George Washington University 2000

16

Your First page

- Create a new page in your site by going to the site files view and clicking on file > new file. Notice a new file will show up.
- Rename your file (index.html) by right-clicking on it and choosing 'rename'



Copyright The George Washington University 2000

17

Page Properties

- Add Page Title
- Set page colors



Copyright The George Washington University 2000

18

Adding content to your page

- Switch to the design window.
- Set the page properties
- Add some texts to your blank page as in the picture.
- Save the page.
- Use the preview feature to see your web page
- Go to the code view to see the HTML.



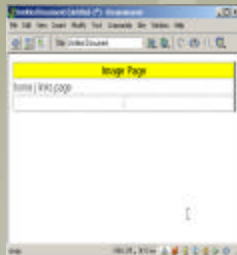
Text formatting

- You will use the Properties box for all text formatting.
 - Change the size of your name to 7.
 - Change the color of your name to red.
 - Add a last updated line, size 2.
 - Italicize the last updated line.
 - Center all the text.
 - Don't forget to save!



Your second page!

- Create a new page
- Set the page properties
- Create & edit a table
- Modify the properties of a table cell
- Add any text formatting you want
- Don't forget to save (name your file images.html)



How can I edit a table?

- Creating a table: insert > table
- Editing a table: select the cells you want to merge, deleted, etc. Then go to modify > table.
- Changing the table properties: select the entire table. Notice the properties box has change to the table properties.
- Changing a cell's properties: select a cell. Notice the cell properties AT THE BOTTOM of the properties box.

Creating the links page

- Create a new page
- Set the page properties
- Copy and paste text in from another file.
 - Notice the choice between copy/ paste and copy/ paste HTML
- Add text up at the top to link back to the homepage and to the images page
- Don't forget to save your file as links.html

Links to other websites

- Add links to the following:
 - Educause = www.educause.edu
 - IATS = <http://www.iats.com/>
 - National teaching and learning forum = <http://www.ntlf.com/>
- Highlight the text you want to make a link
- Type the URL in the properties box
- Save and preview the page to test your links

Links within a page

- Add links from the top menu to the subsections of the page by
 - Inserting “named anchors” (insert > invisible tag > named anchor)
 - Making a link to the anchor we just inserted
 - Saving the page
 - Previewing the page
- Practicing by linking the rest of the menu to the correct part of the page.



Copyright The George Washington University 2000

25

Links to other pages in your website

- Link the links page back to the homepage (index.html) and the images page.
 - Highlight the text that you want to make a link.
 - Click on the little folder in the Properties box.
 - Choose the correct file.
- Save & preview



Copyright The George Washington University 2000

26

Practice linking

- Open the home and image page & make links to the other pages.



Copyright The George Washington University 2000

27

Adding an image

- Copy the ITL logo into your site.
- Go back to the image page.
- Click in the table cell on the bottom right and insert the ITL logo image (logo.gif).
- Notice the properties box changes when the image is selected.
- In the “alt” field in the properties box, type a short description of your image.



Copyright The George Washington University 2000

28

Making the image a link

- Select your image
- In the properties box, type the URL for the ITL (<http://itl.gwu.edu>) in the link field.



Copyright The George Washington University 2000

29

Design hints

- Create a storyboard and site map BEFORE you start making any pages in Dreamweaver. This will save you a lot of work!!
- Create your images BEFORE you start creating your HTML pages.
- Use Web friendly (san serif) fonts.
- Only add images if they contribute to your message – do not overuse images.



Copyright The George Washington University 2000

30

Design hints, cont.

- Use formatting as well as color for emphasis. This helps people with visual impairments.
- Use alt text for all images.
- Use white space and font size to make pages more readable.
- Use high contrast – do not use red text on a pink background, for example.



Copyright The George Washington University 2000

31

Questions?



Copyright The George Washington University 2000

32

Optional after workshop activity

- If you are ready to upload your website to a server, including:
 - Knowing which server you will use
 - Knowing your user name and password
 - Knowing if you have any other websites on the server that you don't wish to damage or erase

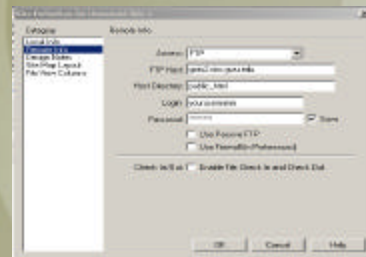
The ITL staff will help you use Dreamweaver to upload your web site to the server.



Copyright The George Washington University 2000

33

Defining a site –remote info



Copyright The George Washington University 2000

34

For additional help

Instructional Technology Lab
Gelman B05A
994-0854



Copyright The George Washington University 2000

35